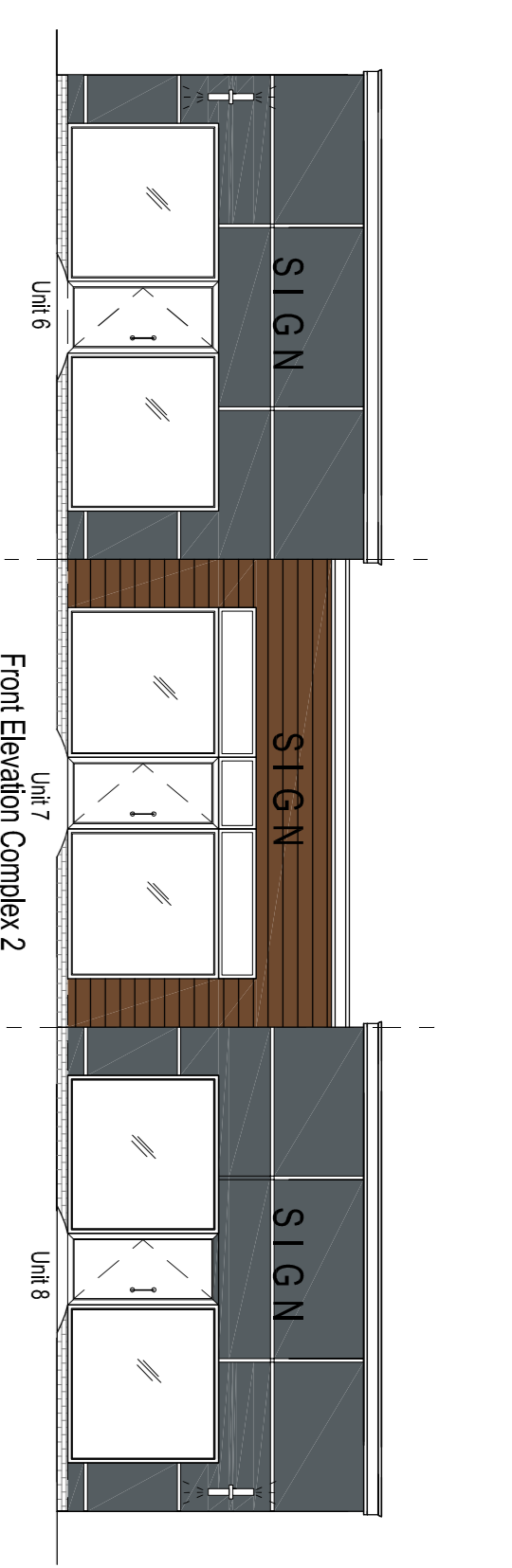
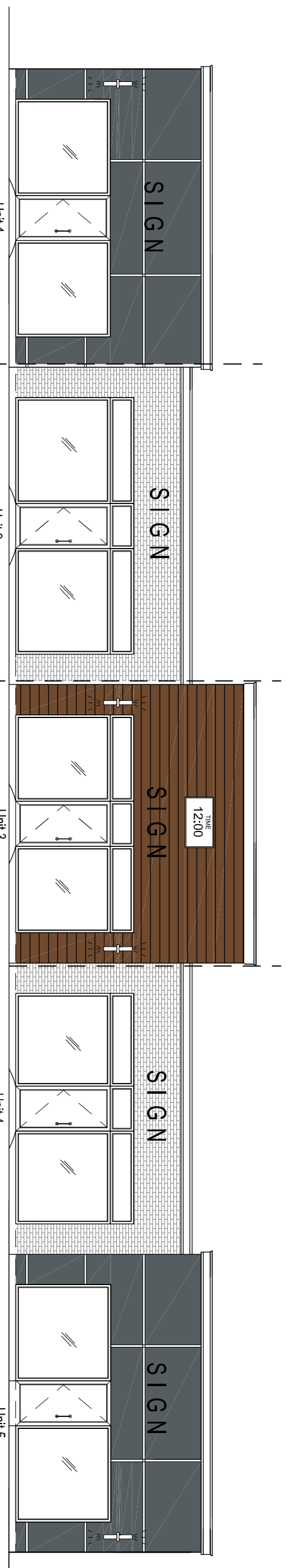
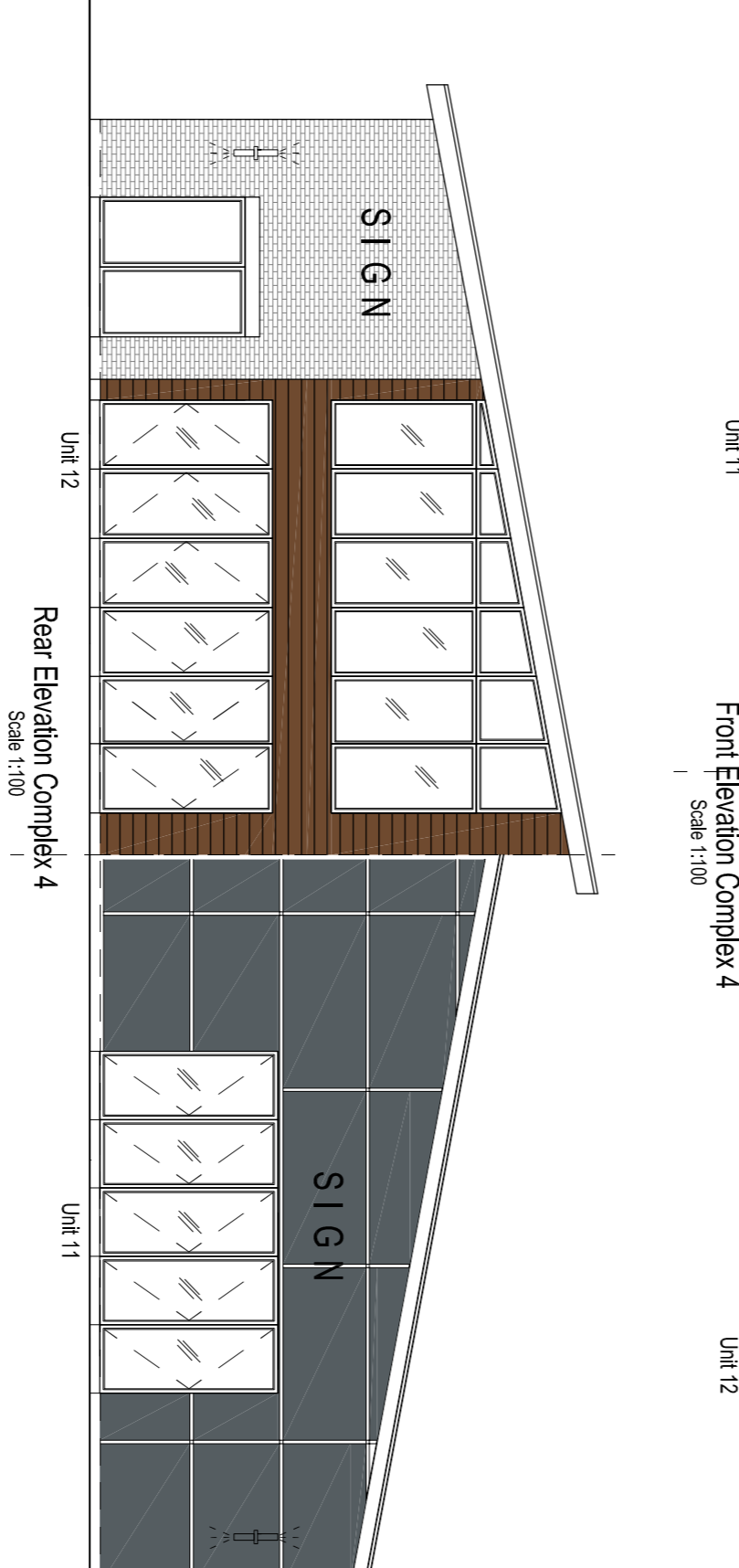
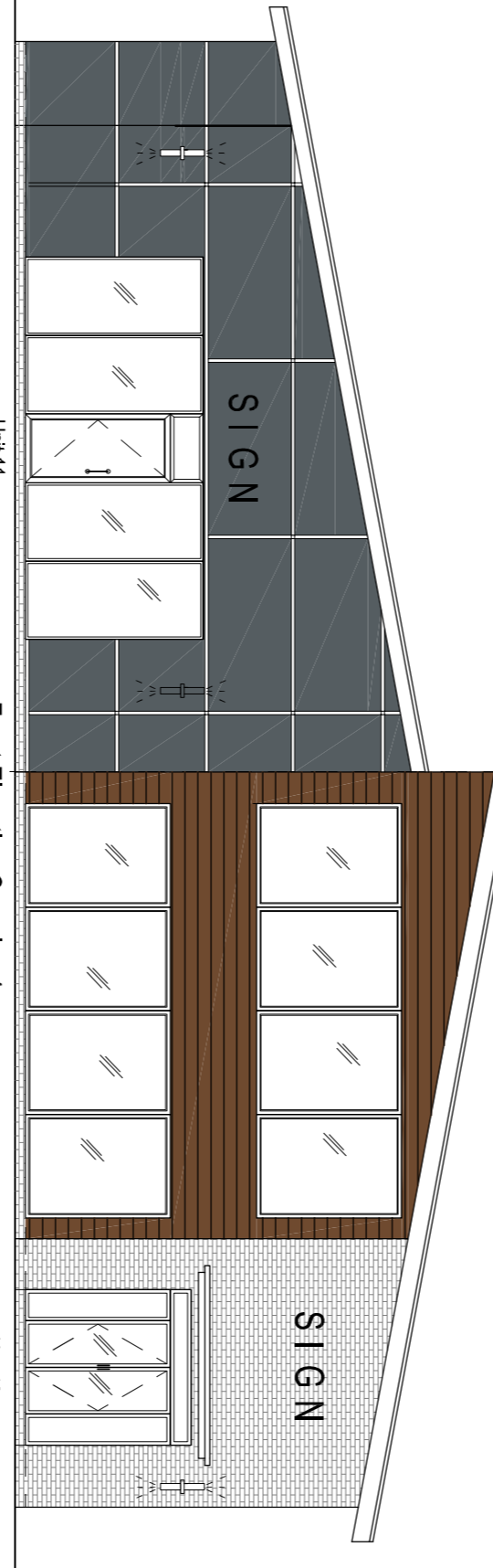
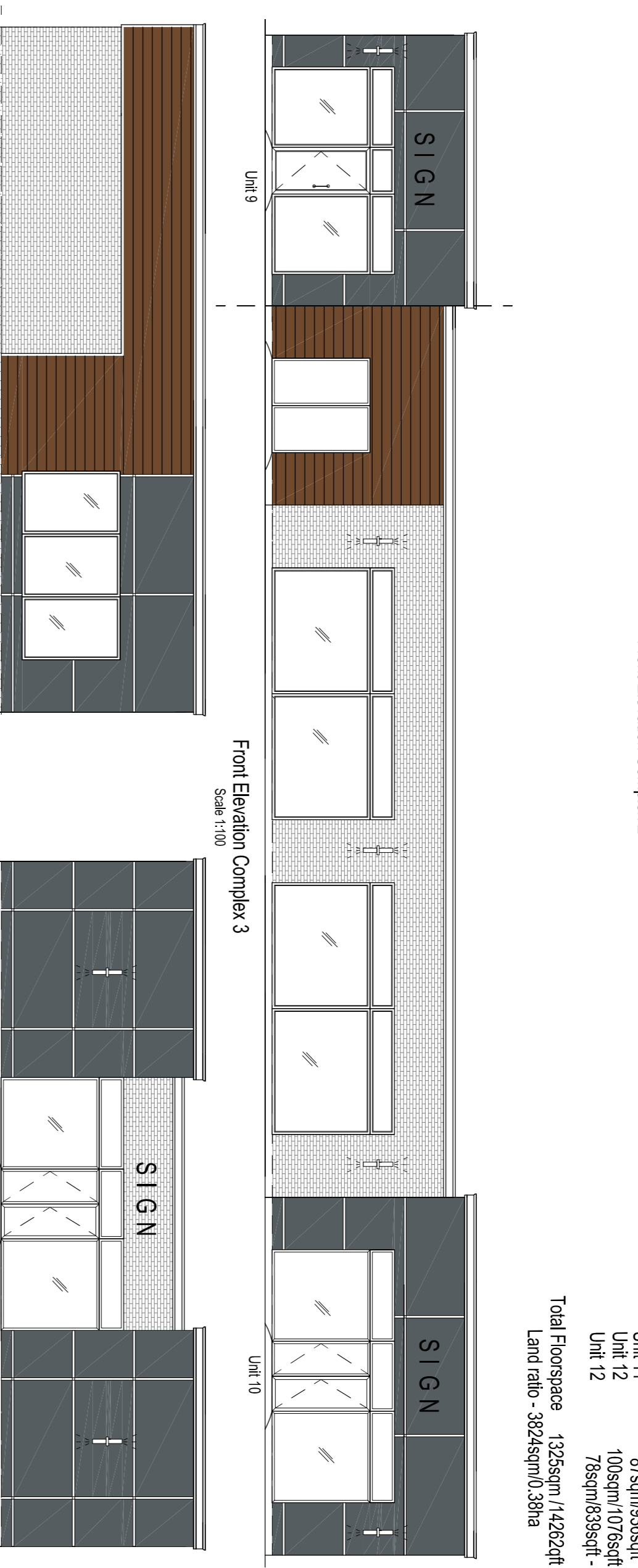
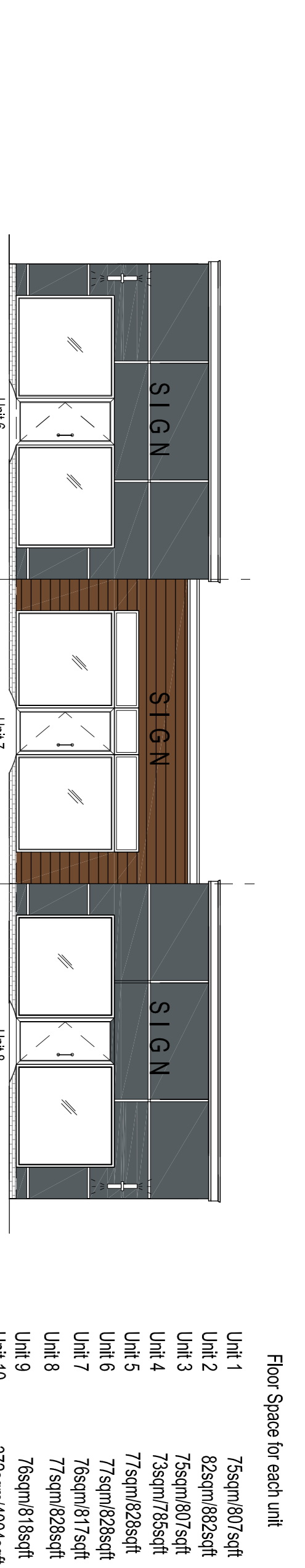


Copyright
 The copyright of this plan is retained in accordance with the Statutory Authority Codes may be made only when in accordance with the Copyright Material Open to Public Inspection (Making of Copies of Plans and Drawings) Order 1990. The moral right of TOTAL PLANNING SOLUTIONS (UK) LTD to be identified as the author of this work has been asserted.

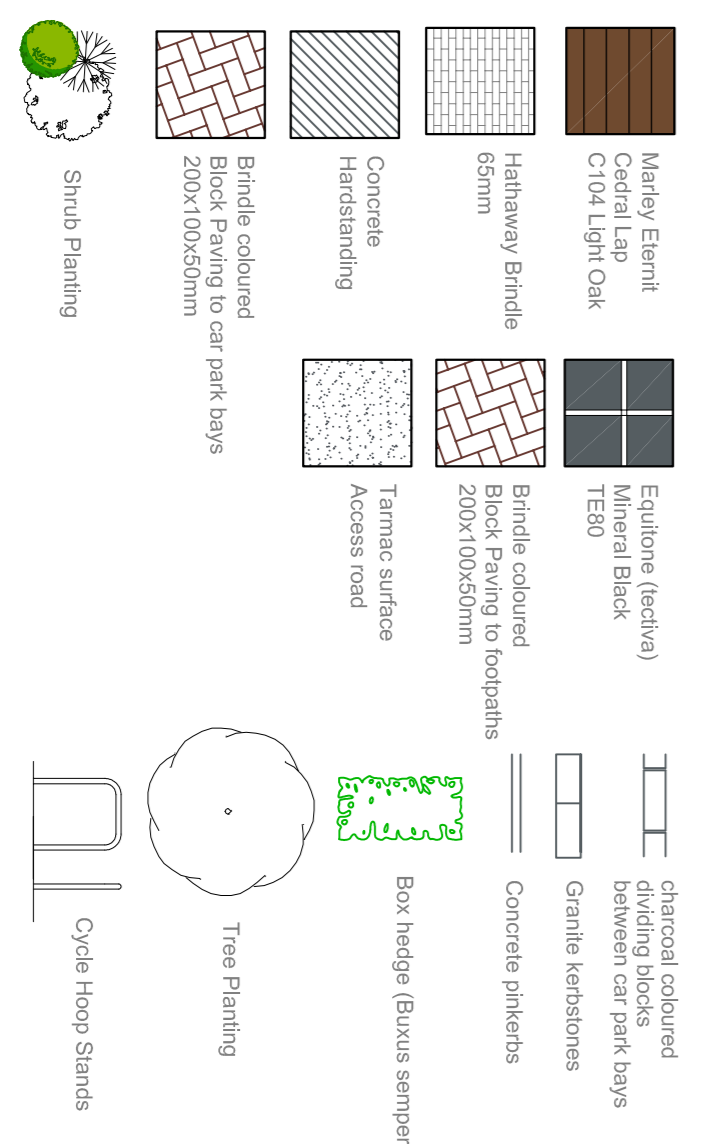


Floor Space for each unit

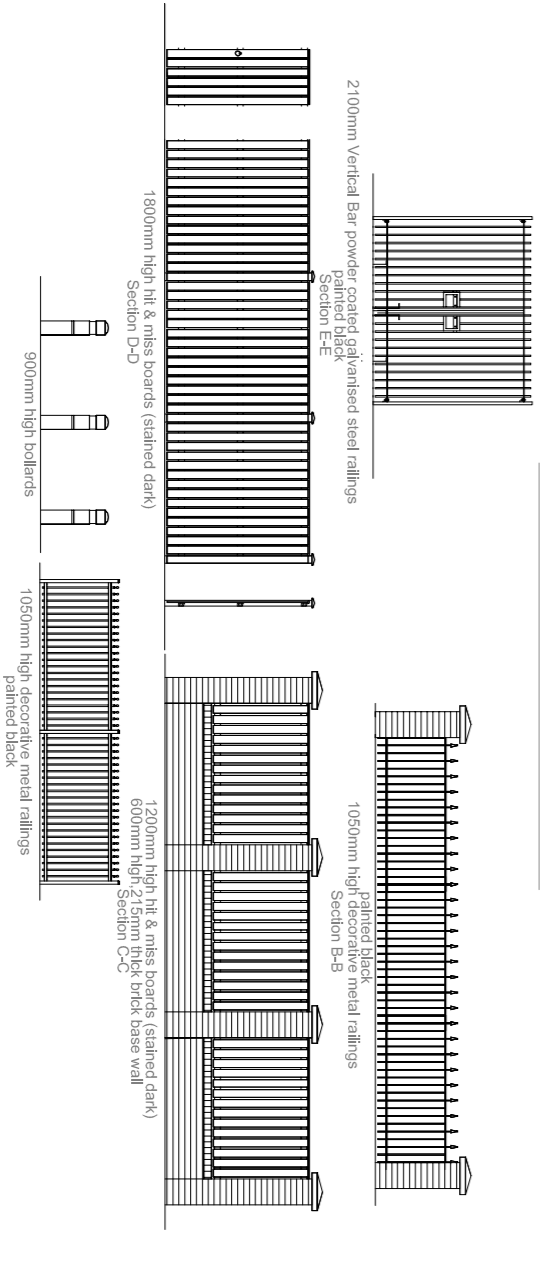
Unit 1	75sqm/807sqft
Unit 2	82sqm/882sqft
Unit 3	75sqm/807sqft
Unit 4	73sqm/785sqft
Unit 5	77sqm/828sqft
Unit 6	77sqm/828sqft
Unit 7	76sqm/817sqft
Unit 8	77sqm/828sqft
Unit 9	76sqm/818sqft
Unit 10	372sqm/4004sqft
Unit 11	87sqm/936sqft
Unit 12	100sqm/1076sqft - Gd Ft
Unit 12	78sqm/839sqft - Hst Ft
Total FloorSpace	1325sqm/14282qft
Land ratio	- 3824sqm/0.38ha



KEY LEGEND



MEANS OF ENCLOSURE



Total Planning Solutions (UK) Ltd
 5 Redon Terrace, Alderbrook
 Technology Park, Stockton
 North Yorkshire YO26 2JG
 Tel: 01724 822000
 Email: info@totalplanning.co.uk

Project: 12no Retail and Non Retail Units
Title: Land at Sandgate, The Rings, Ingley Barwick
Client: SUEVA
Scale: A1
Drawn by: TFS (UK) RL
Date: 18.3.2016
Revision: C
Drawings No.: TPS001/REV C 2016

DWGno TPS001/REV C
 Scale@A1 1:1250; 1:250; 1:100
 Commercial Retail Development for the erection of 12no. units, car parking and associated landscaping
 Land at Sandgate, The Rings, Ingley Barwick, Stockton on Tees